

# XiLog<sup>®</sup>.wmr

Remote automatic meter reader using SMS

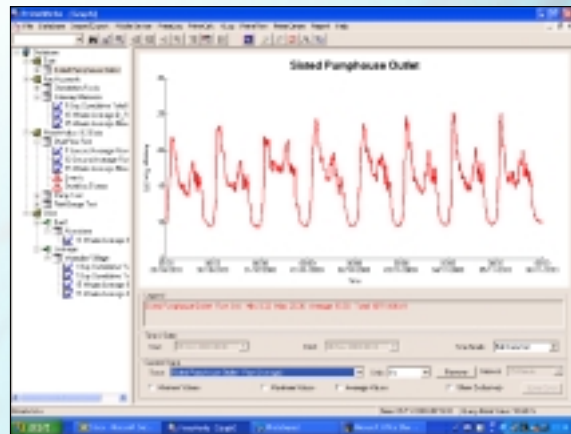
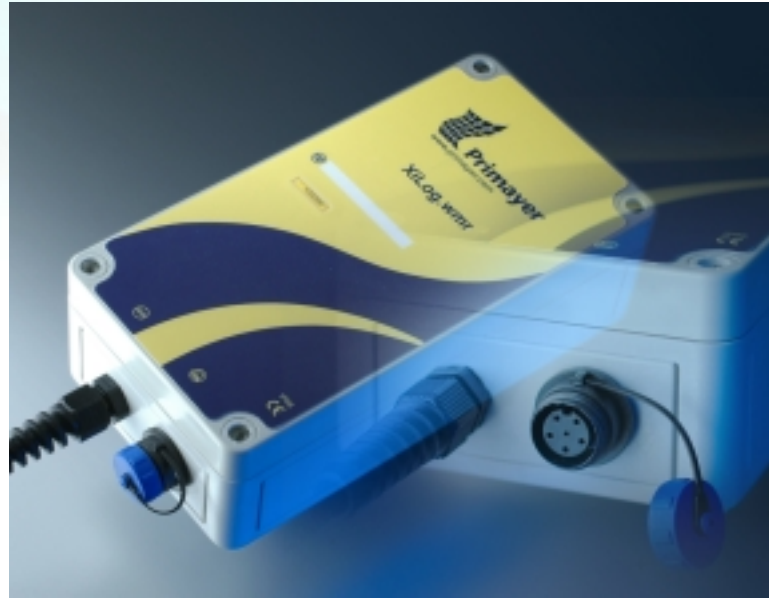
*XiLog.wmr* is a variant of the successful *XiLog* SMS data logger which is optimised for the remote reading of flow meter index value. Optionally *XiLog.wmr* can be programmed to provide additional information for commercial metering, leakage monitoring or distribution system monitoring.

- Data collection without site visits
- Optional daily, weekly or monthly data collection
- Thousands of meters can be read regularly
- Remote reading of key customers for rapid billing
- Control of operational costs
- Local 15 minute flow-rate data available

*XiLog.wmr* counts pulses from a flow meter and transmits a regular SMS message containing the total volume of water that has passed through the flow meter (the index value).

The *XiLog.wmr* can be programmed for one of three modes of SMS messaging operation:

- Transmission of meter index plus the most-recent-day of 15 minute flow-rate values (for monitoring diurnal profile).
- Transmission of index plus minimum night flow-rate values for the most recent calendar month (for use in leakage monitoring).
- Transmission of index plus daily total flow values for the most recent calendar month (for use in commercial metering).



Reporting, graphing, database and export from PrimeWorks

### ***XiLog.wmr* offers the following features:**

- Two, uni-directional flow inputs
- Simple installation
- Local readback of all flow values logged at 15 minute intervals
- High - low alarm facility (option to mobile telephone)
- Alarm if sensor cable is cut or on door opening
- Automatic clock correction to GSM network
- Powered for 5 years minimum
- Mains powered version available

### **Below-ground model**

- For installation in underground chambers, small pits and chambers
- Submersible to IP68
- Antenna mounted externally
- Factory / distributor fitted SIM card
- Factory / distributor battery change

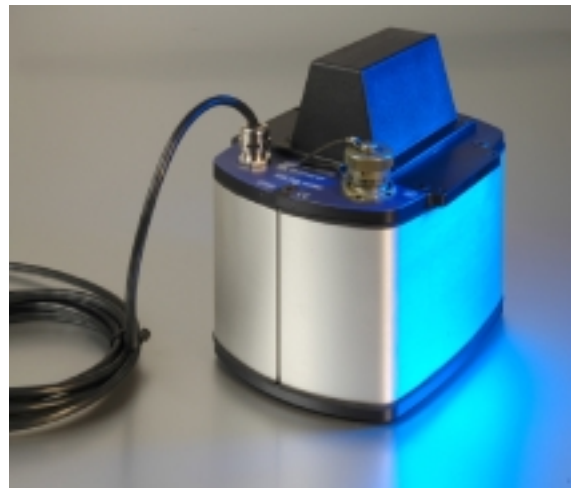
### **Above-ground model**

- For installation in roadside kiosks, buildings, etc.
- Rainproof to IP66
- Low cost
- User can make sensor connection
- Integral antenna
- User can fit SIM card
- User can change battery pack

### **Flowmeter inputs**

*XiLog.wmr* will operate with the following contact-closure pulse units and electromagnetic flowmeters:

<b>Manufacturer</b>	<b>Pulse Unit Type</b>
Elster	Helix 2000/3000 pulse unit - LRP, PU10 Helix 4000 pulse unit - PG100 PSM, MSM meters
Sensus	K505R, K510, RO1.1, RD01
Actaris	Model S, Cyble LF
ABB	Magmaster, AquaProbe Aquamaster



*Below-ground IP68 model*



*Above-ground IP66 model*

### **Part Numbers**

XiLog.wmr - IP66 model	WXG 001
XiLog.wmr - IP68 model	WXG 051
XiLog.wmr - IP66 model Communications cable	WXG 006
XiLog.wmr - IP68 model Communications cable	WXG 056